

Massive Star Formation in the LMC

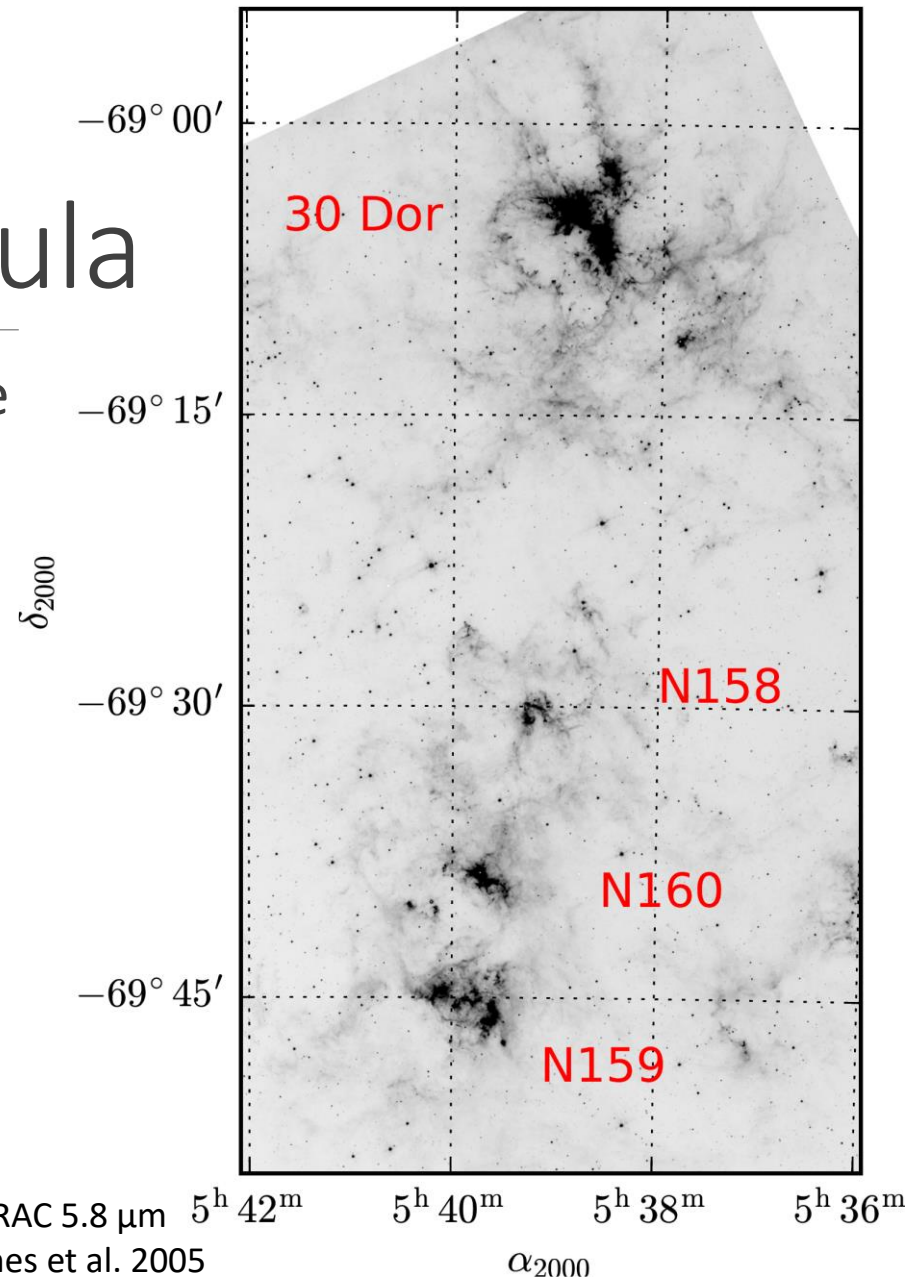
SOFIA Tele-Talk, February 1, 2017

Michael Gordon, Terry Jones, Bob Gehrz—Minnesota Institute for Astrophysics

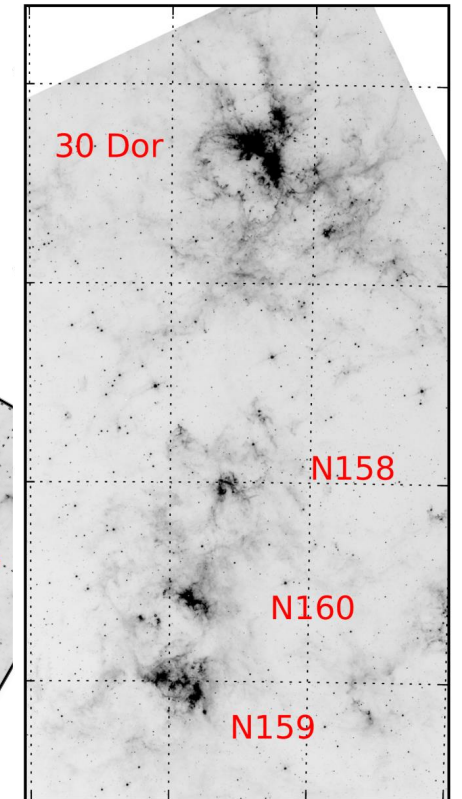
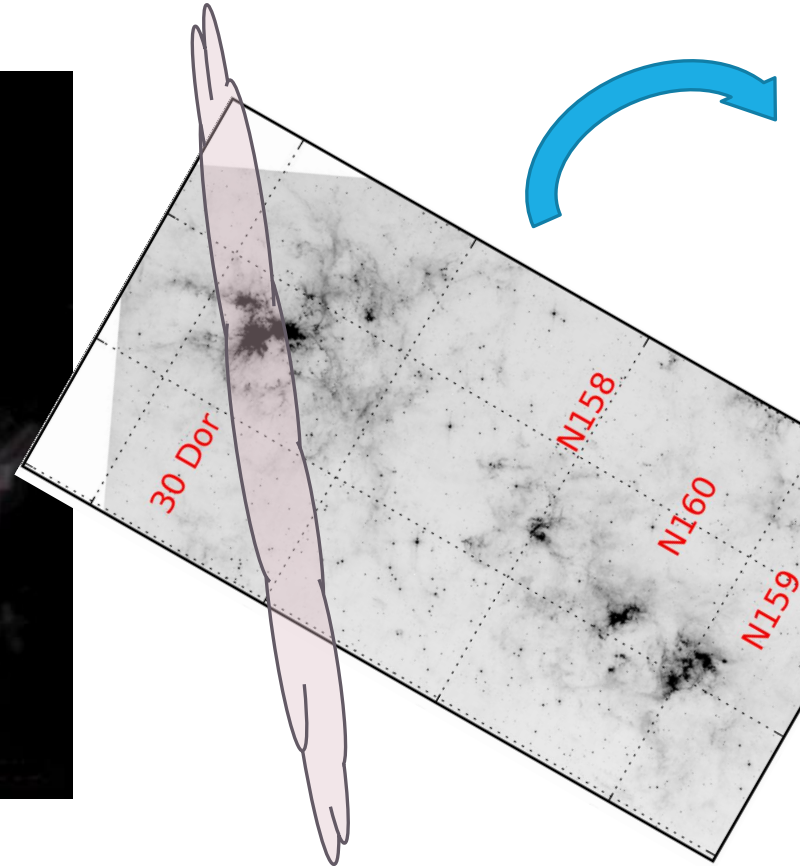
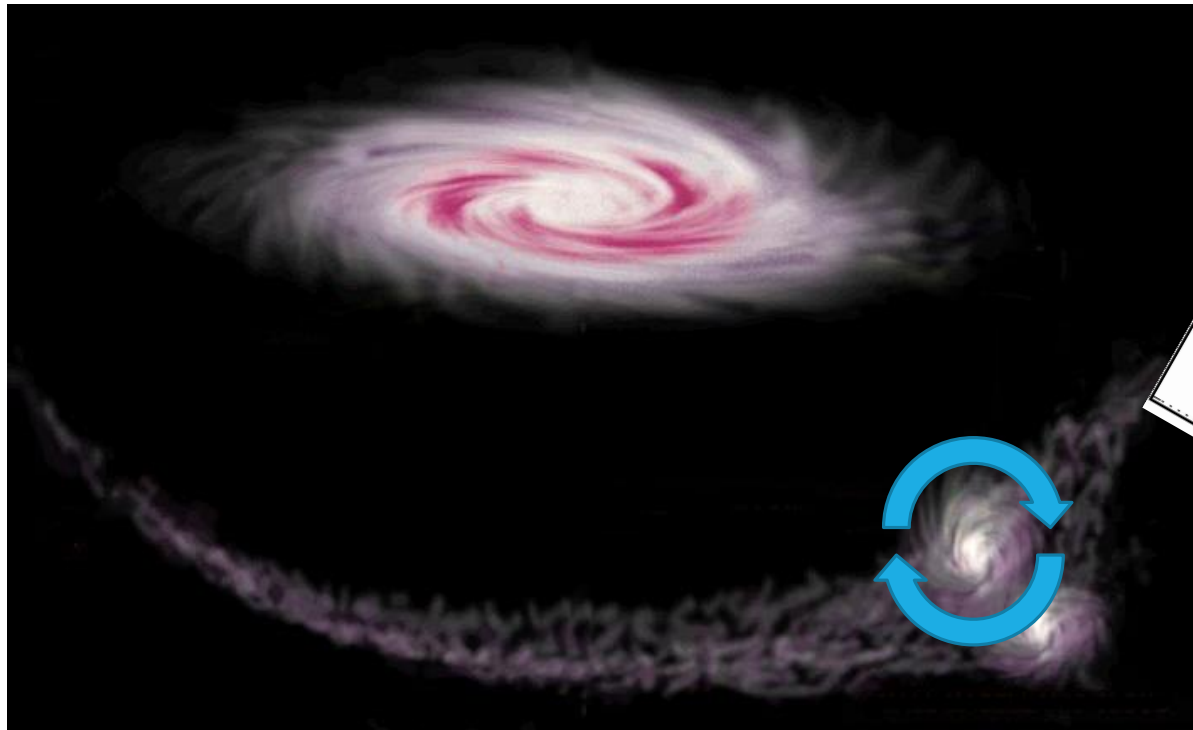
Andrew Helton—USRA–SOFIA Science Center

30 Doradus/Tarantula Nebula

- Largest and most active star-forming region in the Local Group
- CO peak at N159—indicator of pre-star core
- Hosts extragalactic protostars, **P1** and **P2**
- Numerous HII regions and filamentary H α emitting bubbles
- **Excellent laboratory for studying star formation**

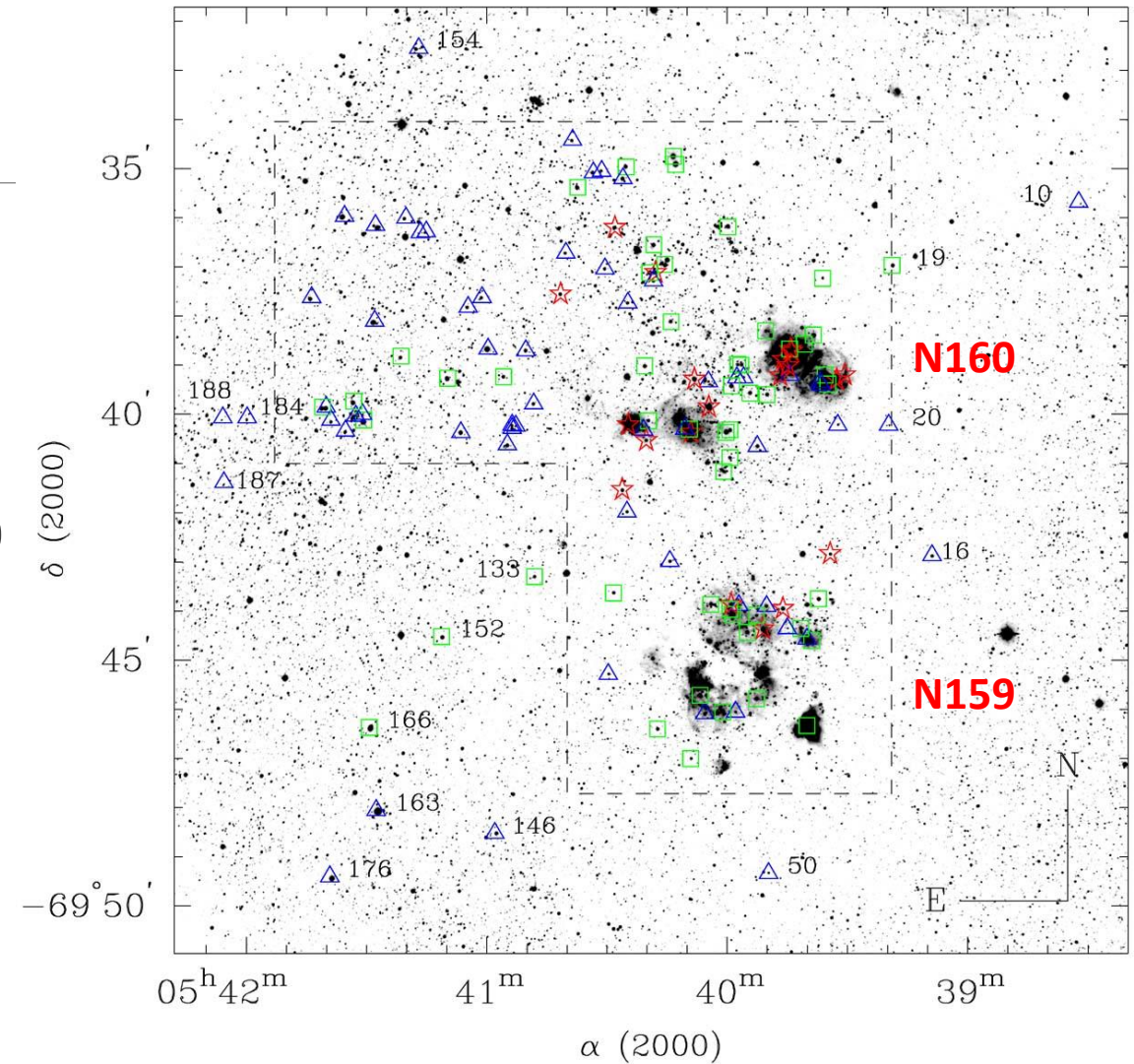


De Boer 1998, Bow-Shock Induced SF

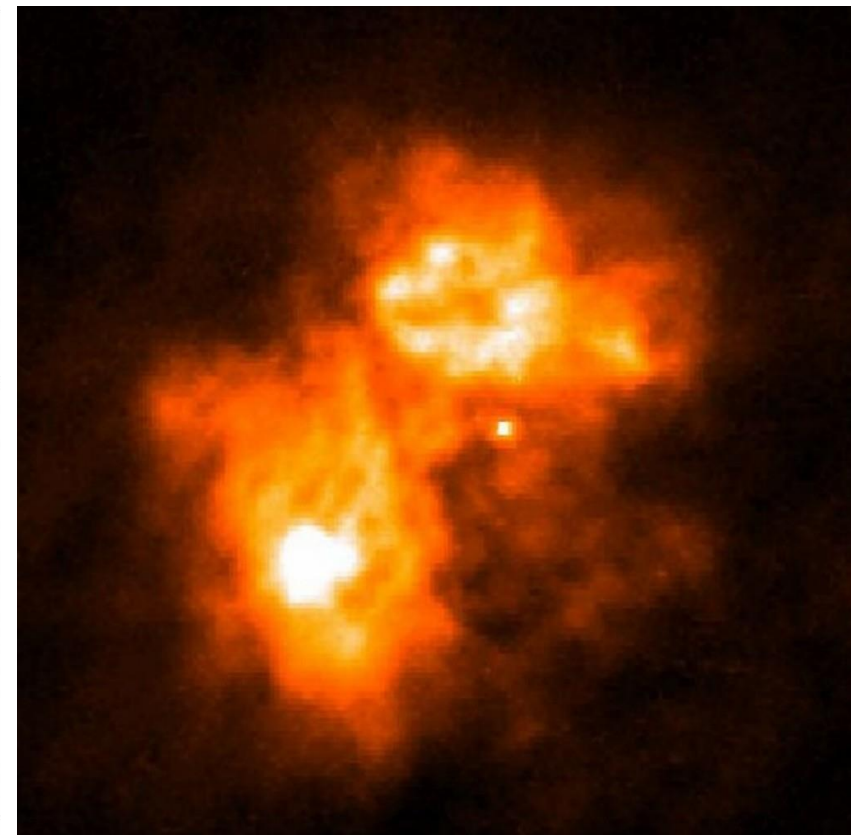
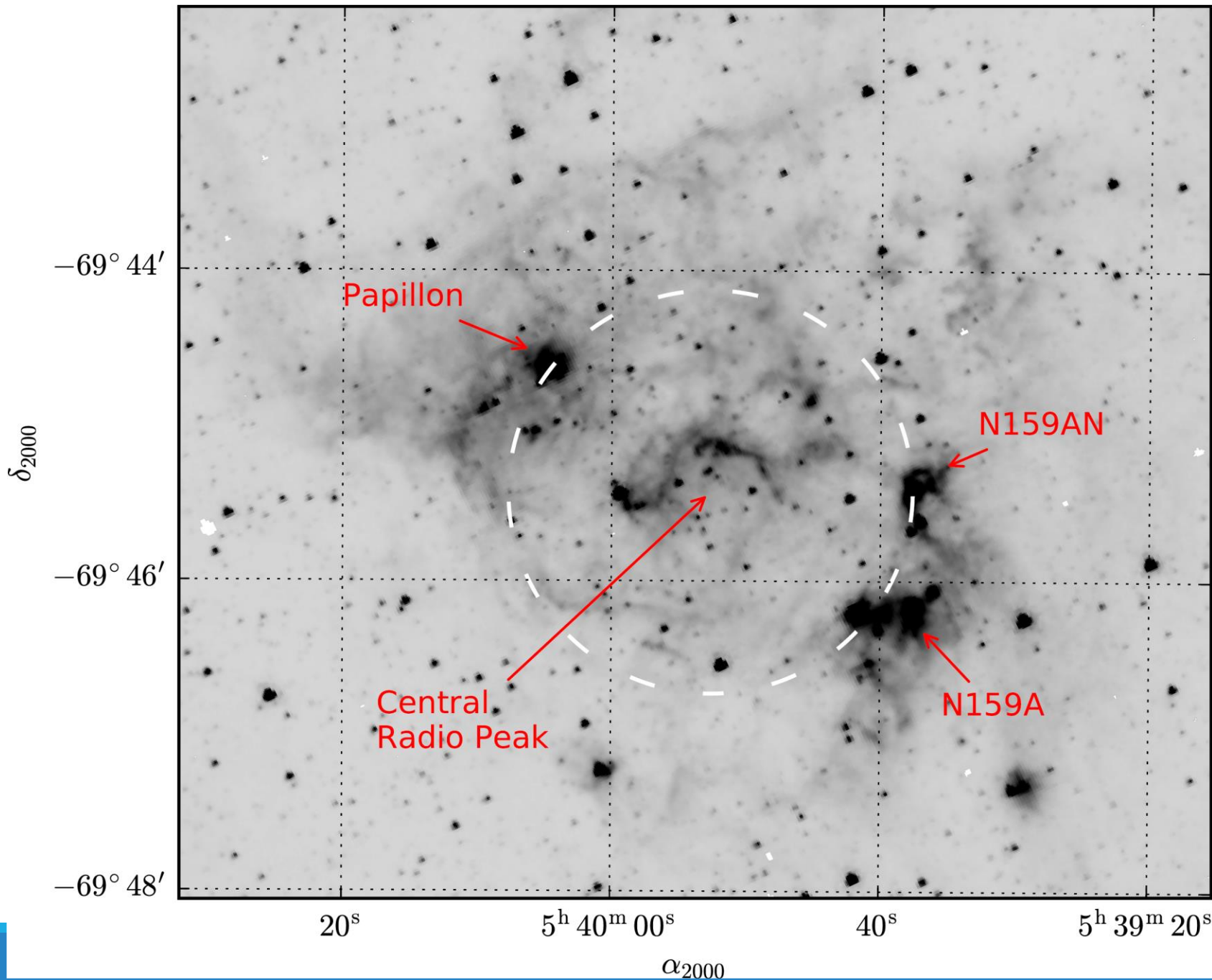


Age Gradient?

- De Boer et al. 1998; MW bow-shock scenario
 - Ages NW to SE as LMC rotates
 - Sequential, but not triggered (not self-propagating)
- Farina et al. 2009; common time origin for N159/N160
 - No specific N to S age gradient
 - Areas within HII regions may still have triggered star formation



Farina et al. 2009. **O3-O5**, **O6-B0**, **B1-B8**



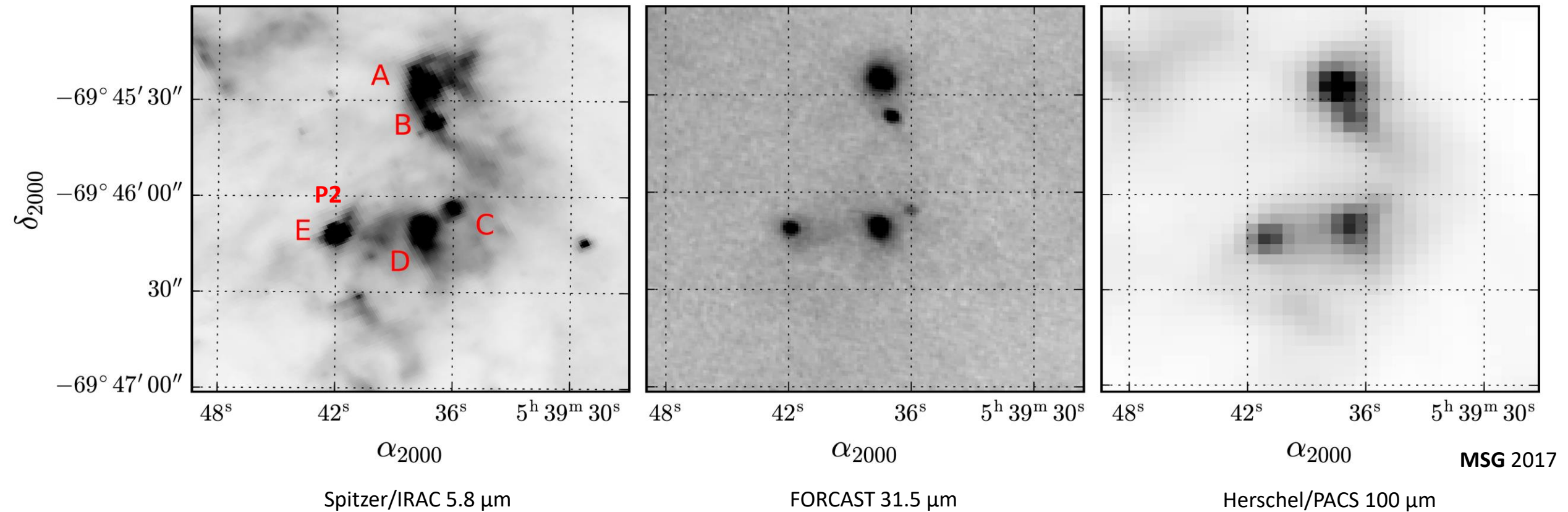
“Papillon” — M. Heydari-Malayeri, HST WFPC2
 “High-excitation blob” HEB
 High excitation state, small size, high density,
 and large extinction compared to avg HII reg

MSG 2017, Spitzer/IRAC 3.6 μm
 reproduced from Jones et al. 2005

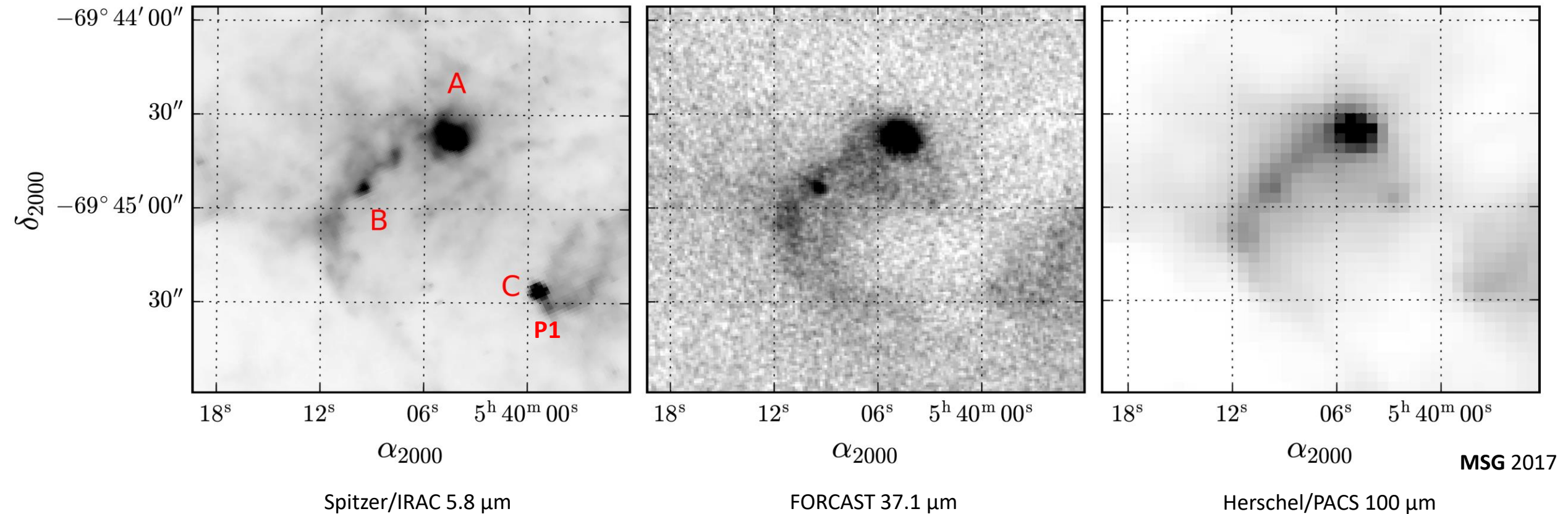
Goals

- Mid-infrared census of N159 and N160
- Spatially-resolve Spitzer/IRAC sources at $\lambda > 20$ microns (*requires SOFIA!*)
- Search for massive young stellar objects
 - embedded sources will be bright at 30 microns *with no IRAC counterpart*
 - these would be analogous to Class 0 YSOs or young IRDCs
- Study local environment of massive star-forming regions
 - dust temperature
 - dust content
 - mass-accretion rates

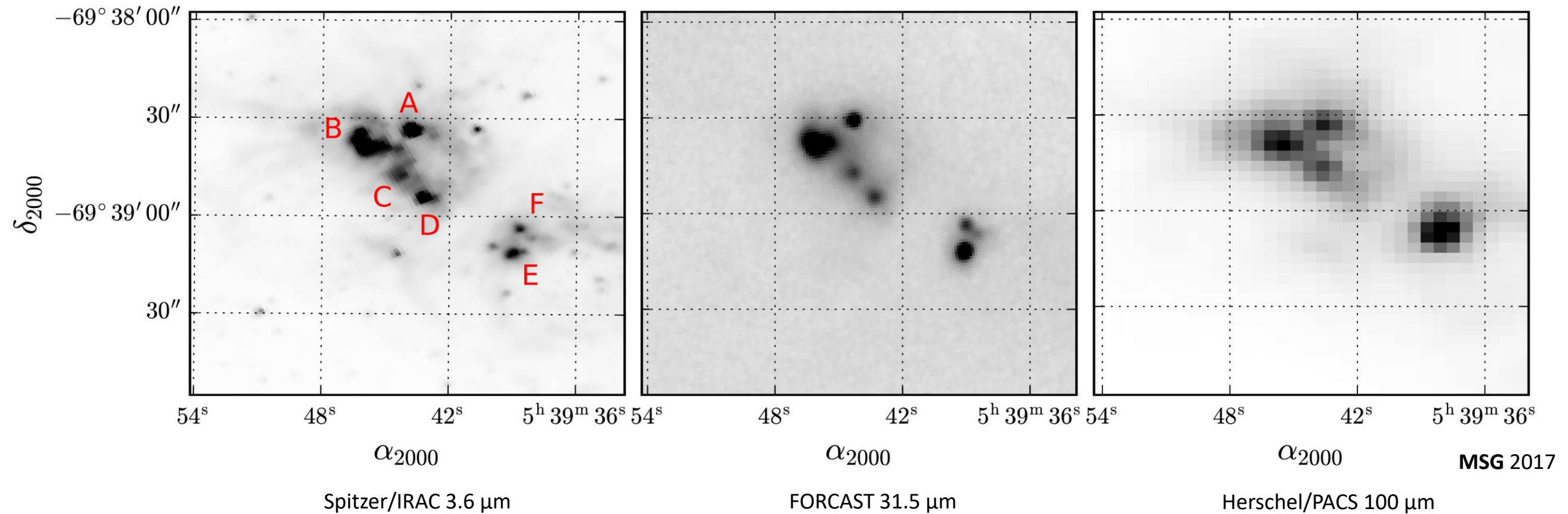
N159A

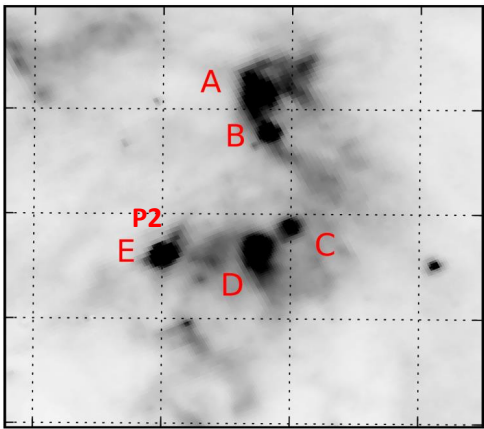


N159 Papillon

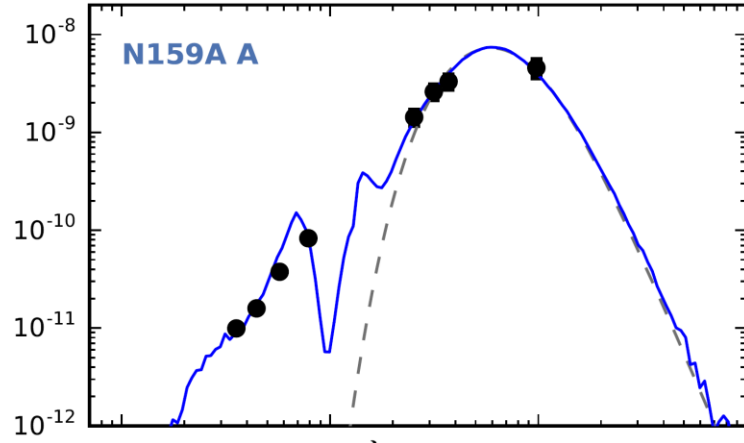


N160

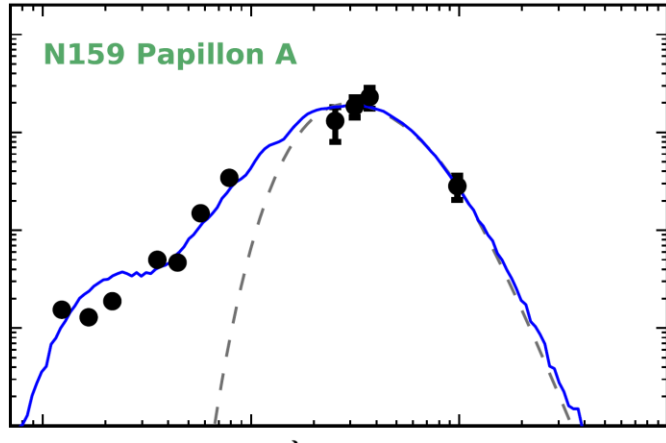




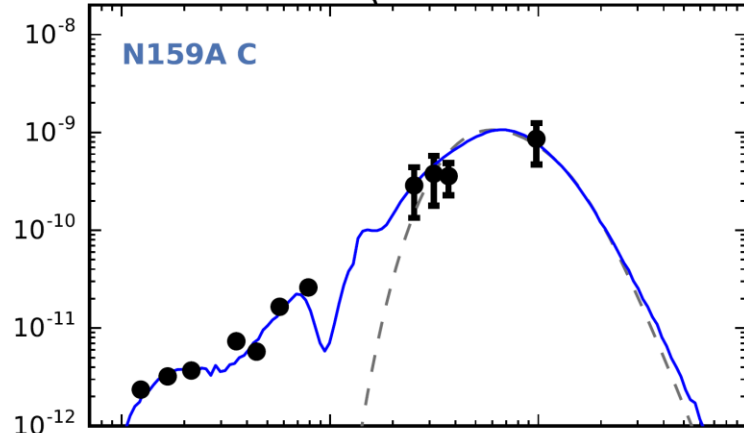
N159A



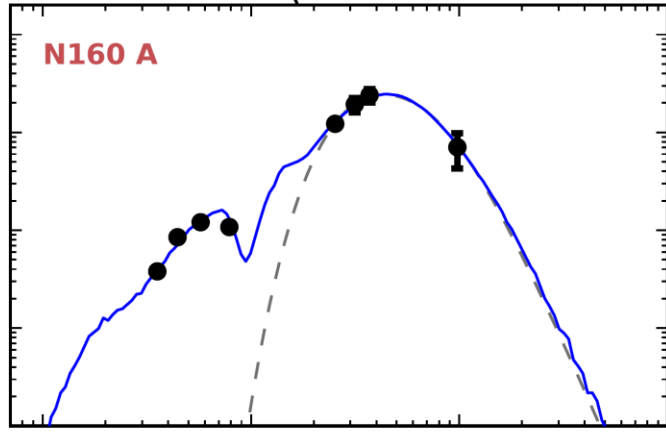
N159A A



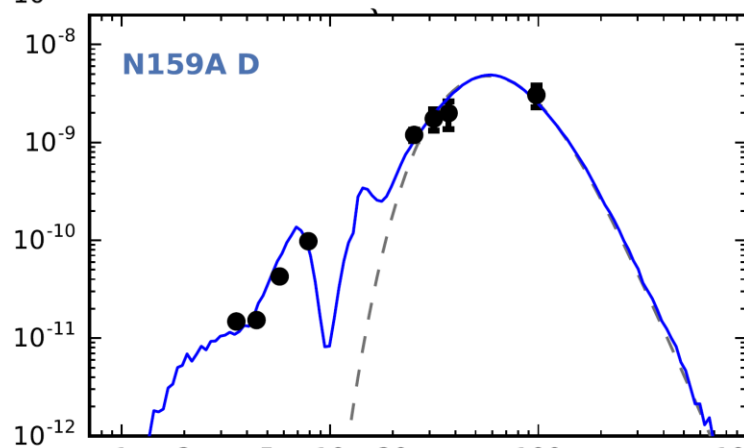
N159 Papillon A



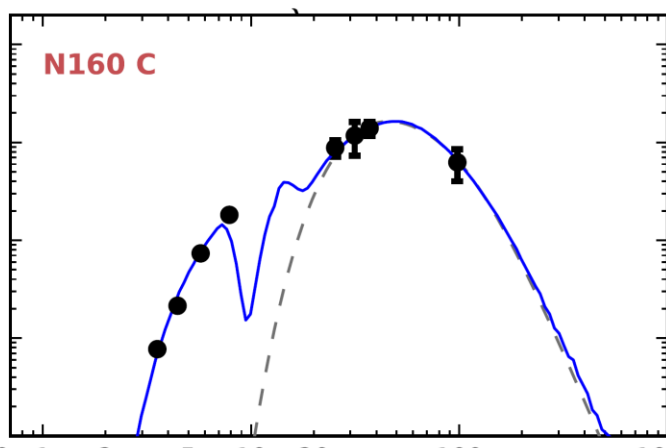
N159A C



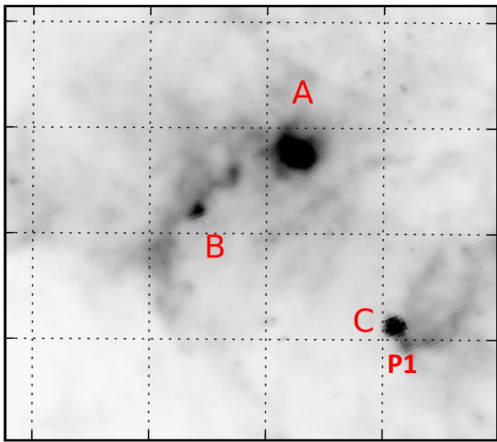
N160 A



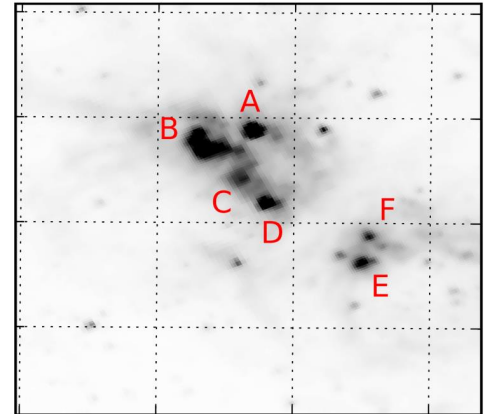
N159A D



N160 C



N159 Pap



N160

MSG 2017,
SED models from
Robitaille et al. 2007

Gray body fits to
characterize thermal dust
emission

$$\epsilon_{\lambda} \propto \lambda^{-\beta}$$

(Rathborne 2010,
Jones, MSG 2016)

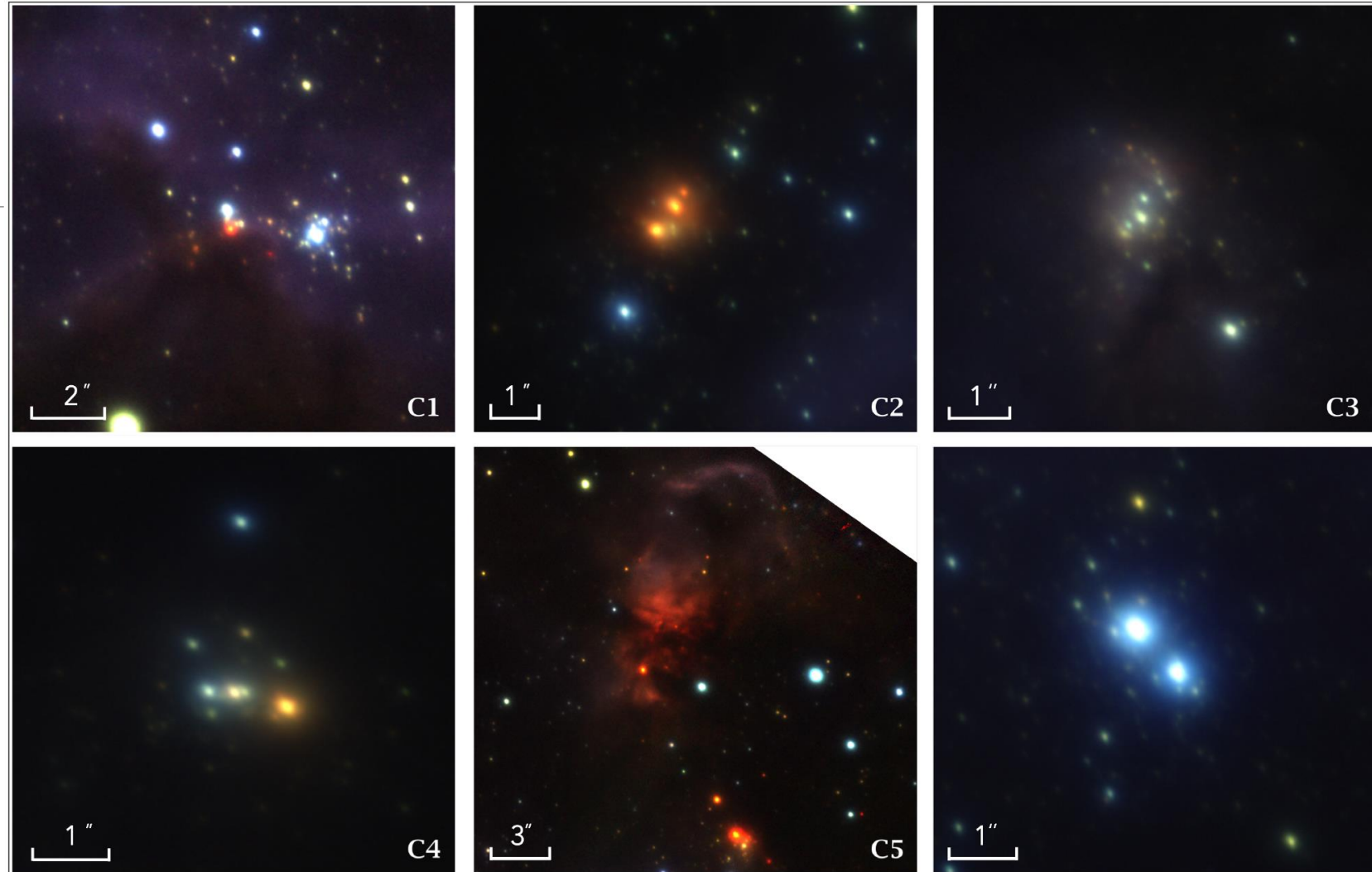
λF_{λ} (ergs/s/cm²)

λ (μ m)

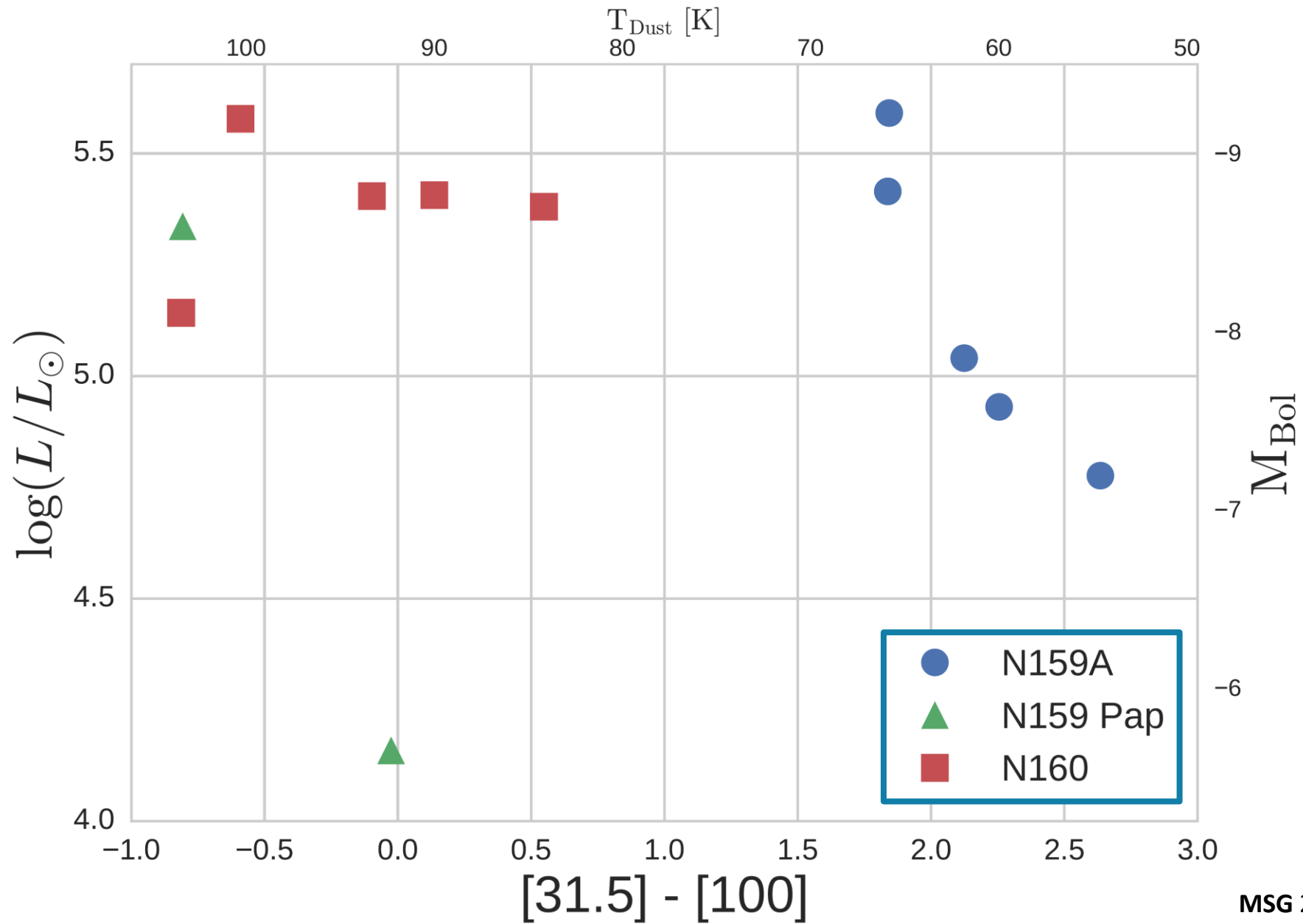
λ (μ m)

Caveats

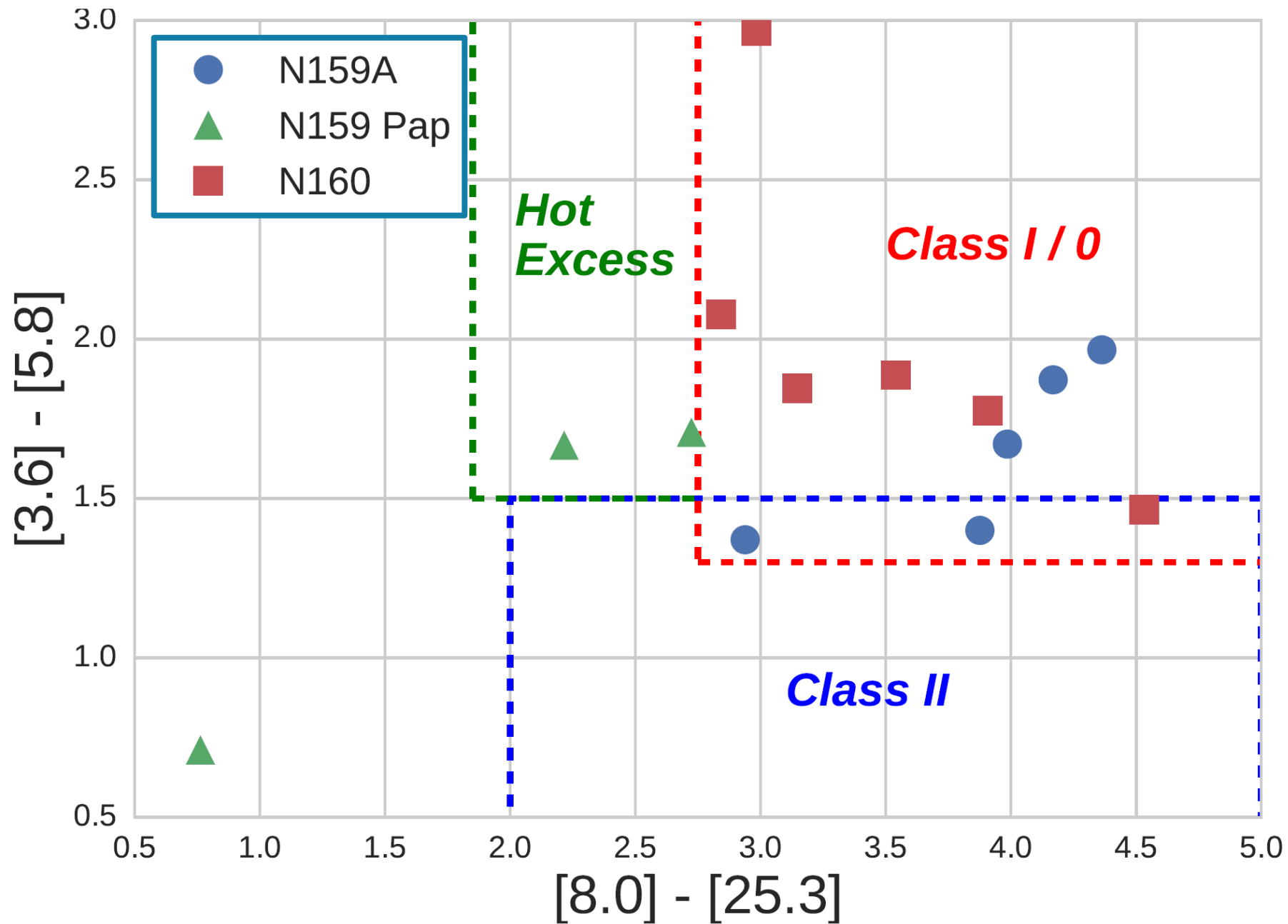
- Multiplicity!
- Even at diffraction limit, cannot separate sources at $30\ \mu\text{m}$
- Varied populations in N159/N160 suggest that ***only one massive YSO will contribute to mid-IR flux*** (Chen 2010, Bernard 2016)
- Isochrones in models were scaled up low-mass PMS stars



N159A, J—Ks image, Bernard et al. 2016. GeMS/GSAOI.
Compact clusters with multiple components revealed.



MSG 2017



MSG 2017,
classification scheme
from Reach (2004) &
Rho (2006)

- “Hot excess”
1. Herbig Ae/Be stars
 2. Active accretion
 3. HEBs

Conclusions

- Confirmed increased dust obscuration in N159A compared to N160
- Models and dust temp. suggest N160 is older than N159A
- Papillon consistent with “high-excitation blob”
 - suggests internal triggered star formation in N159
- FORCAST provides complete census of protostars in these regions
- No new, undiscovered Class 0 YSOs
- P1 *not* a protostar—no mid-IR emission
- P2 has strong emission out to 37 μm

Future Work

- Cycle 5 observations of N158
- N158 potentially old enough to host very young massive stars
 - Testor & Niemela 1998—two OB associations between 2 and 8 Myr

- References

Gordon, M. S., Jones, T. J., Gehrz, R. D., Helton, L. A. 2017, ApJ, 834, 122
Jones, T. J., **Gordon, M. S.**, Shenoy, D., et al. 2016, AJ, 151, 156
Jones, T. J., Woodward, C. E., Boyer, M. L., Gehrz, R. D., & Polomski, E. 2005, ApJ, 620, 731
Robitaille, T. P., Whitney, B. A., Indebetouw, R., & Wood, K. 2007, ApJS, 169, 328
Bernard, A., Neichel, B., Samal, M. R., et al. 2016, ArXiv e-prints, arXiv:1605.07846
Farina, C., Bosch, G. L., Morrell, N. I., Barba, R. H., & Walborn, N. R. 2009, AJ, 138, 510
de Boer, K. S., Braun, J. M., Vallenari, A., & Mebold, U. 1998, A&A, 329, L49
Gatley, I., Becklin, E. E., Hyland, A. R., & Jones, T. J. 1981, MNRAS, 197, 17P
Rathborne, J. M., Jackson, J. M., Chambers, E. T., et al. 2010, ApJ, 715, 310
Testor, G., & Niemela, V. 1998, A&AS, 130, 527