



---

# FLITECAM

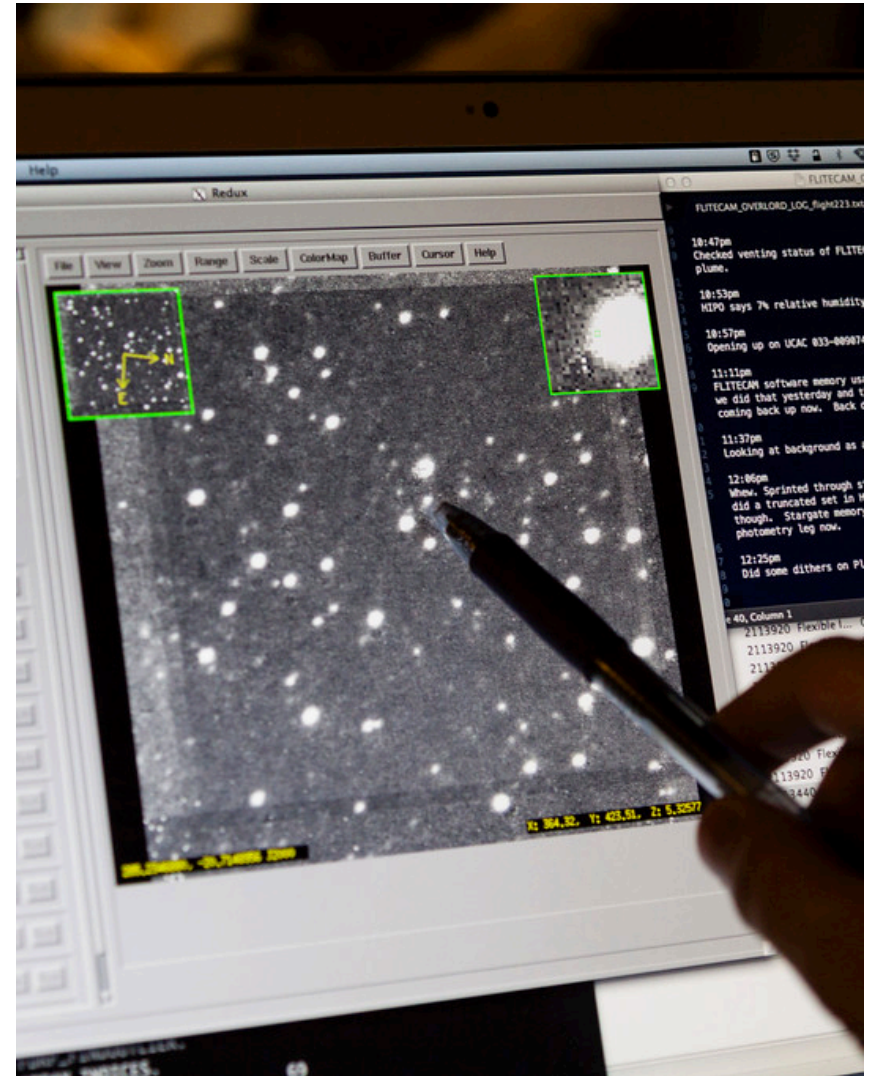
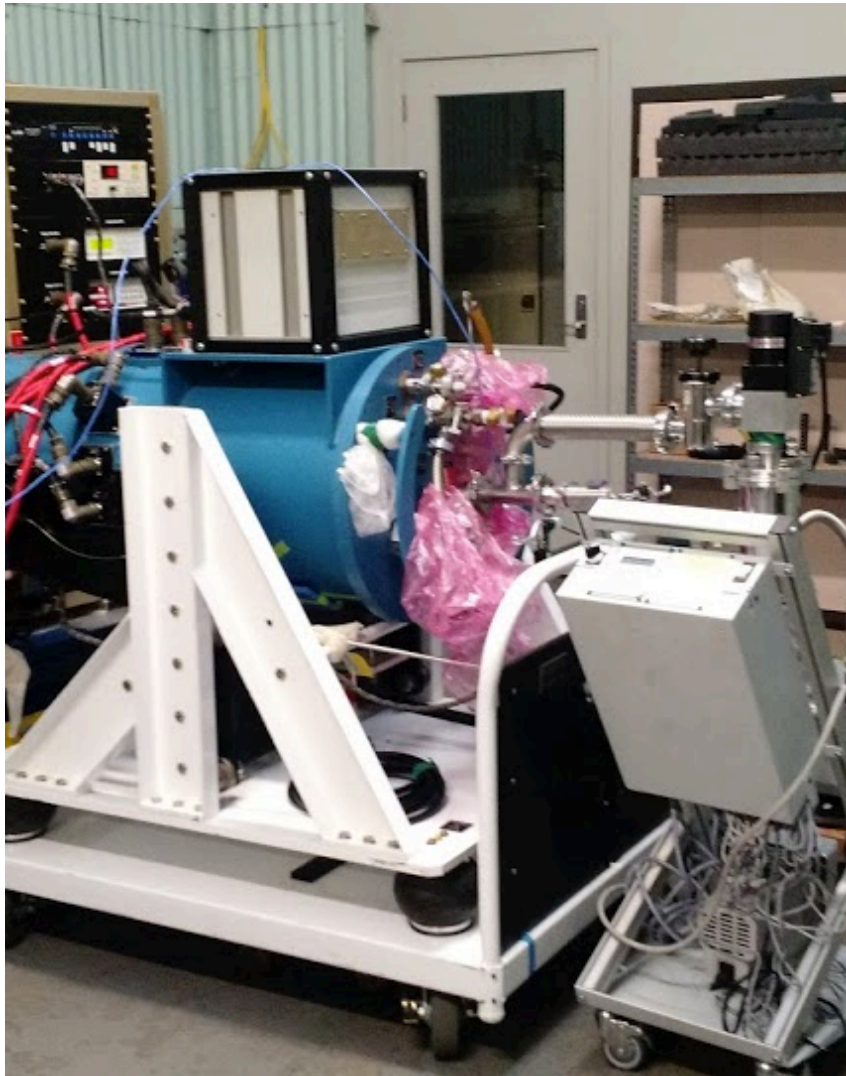
Ryan T. Hamilton

FLITECAM Instrument Scientist  
Visiting Post Doctoral Researcher

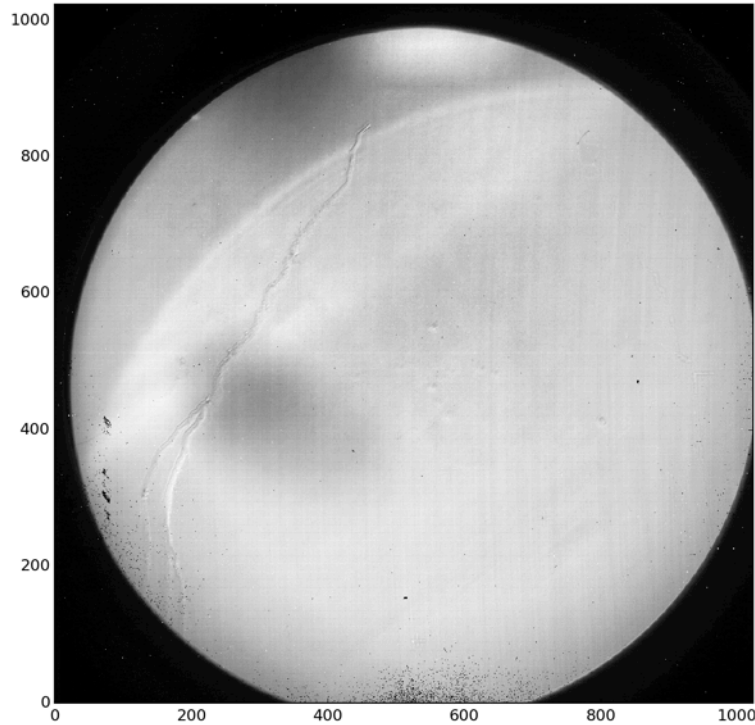




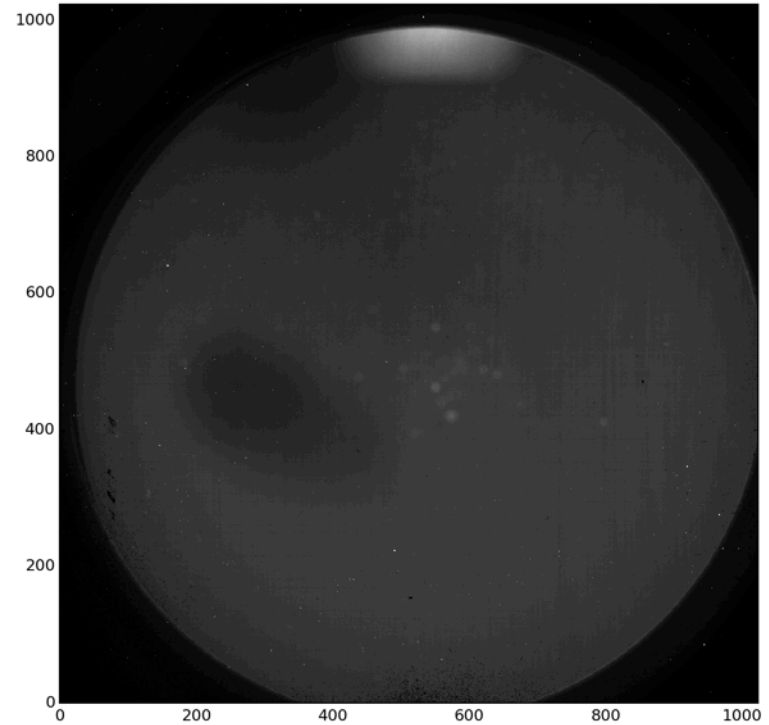
# FLITECAM in New Zealand



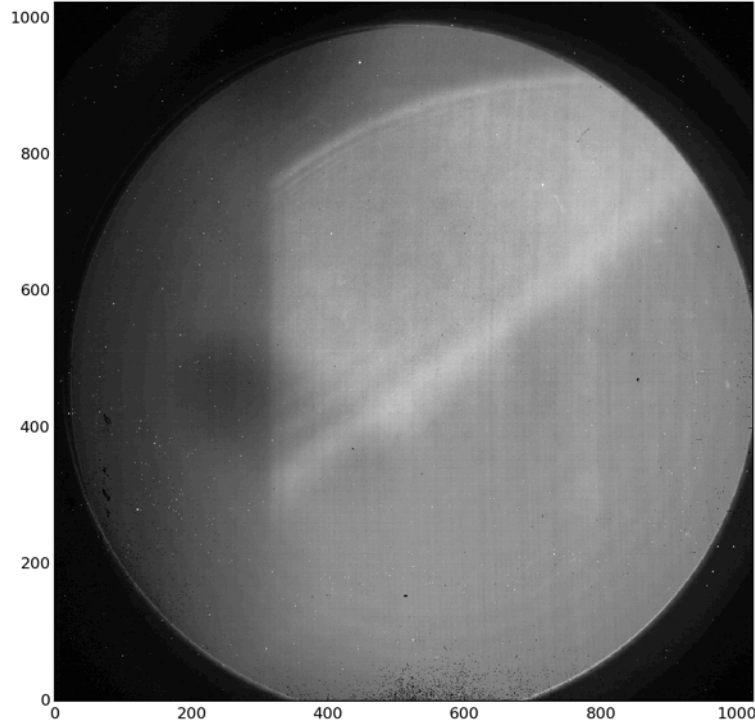
# FLIPO: SI Image



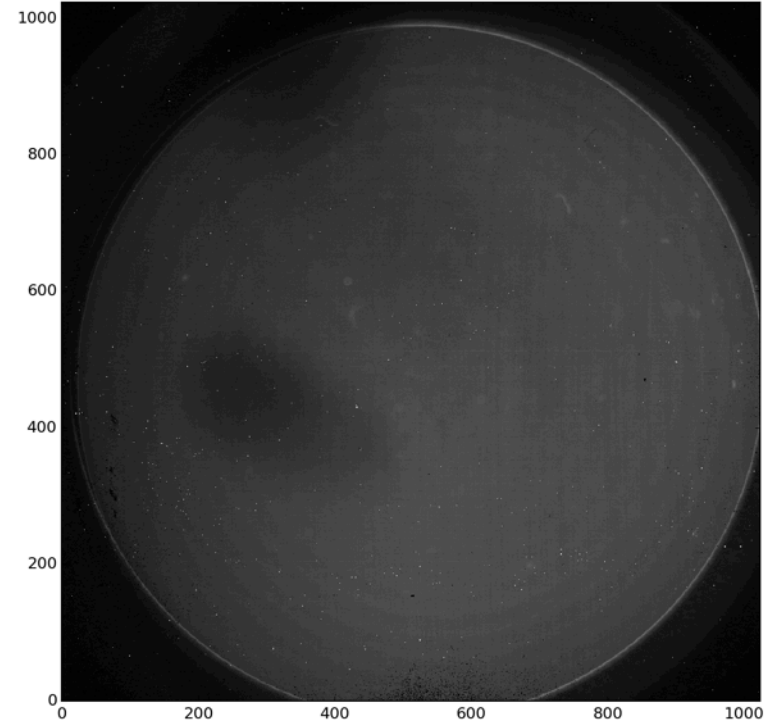
20 deg. elev.



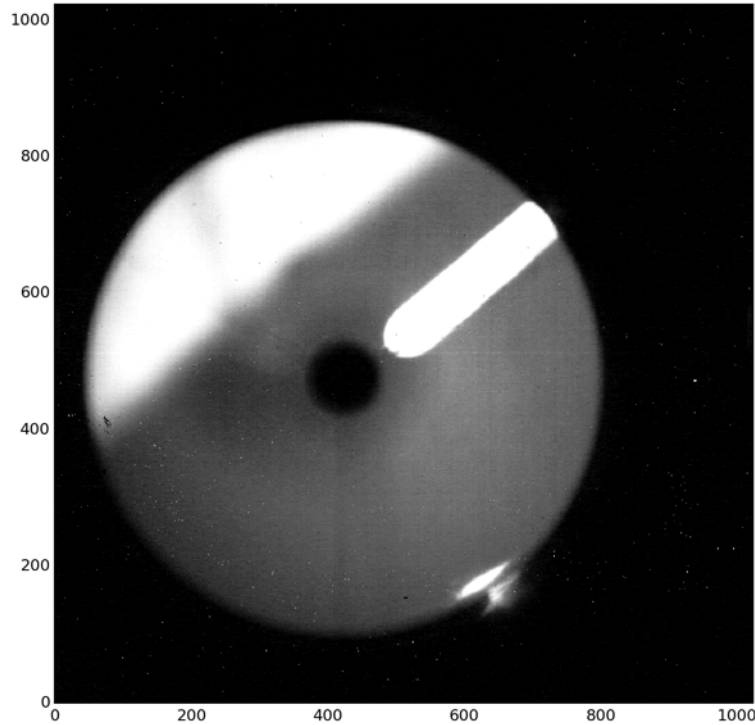
50 deg. elev.



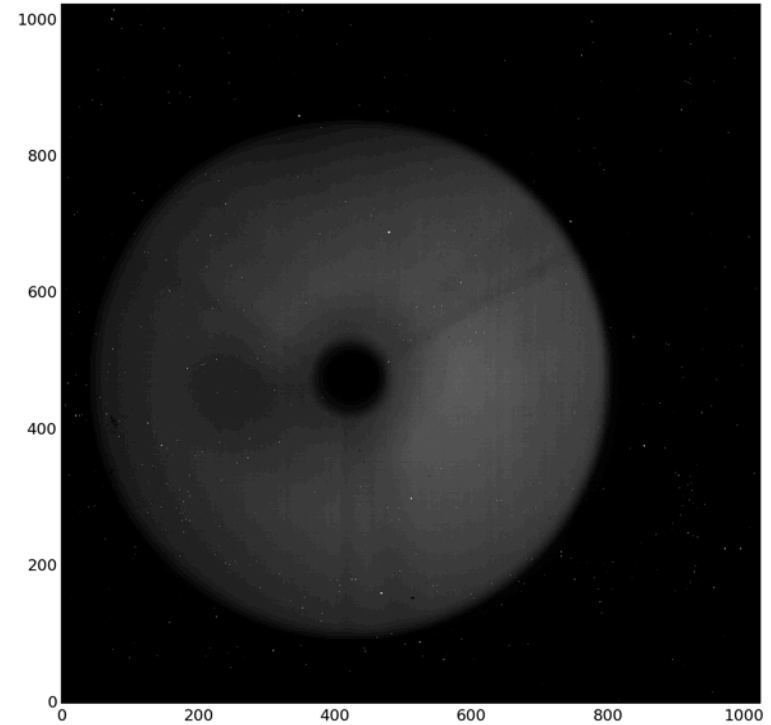
35 deg. elev.



44 deg. elev.



25 deg. elev.



50 deg. elev.



# FLITECAM: Pupil Image

---

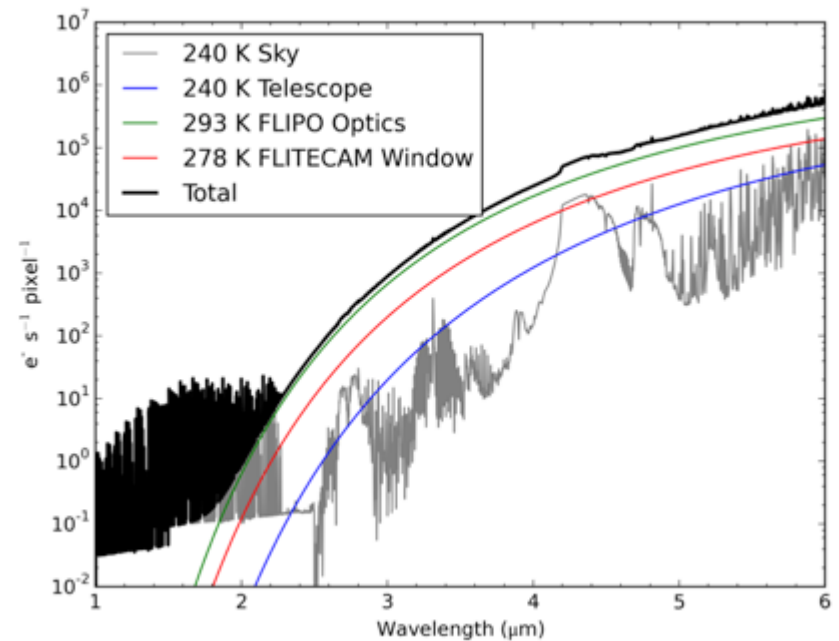
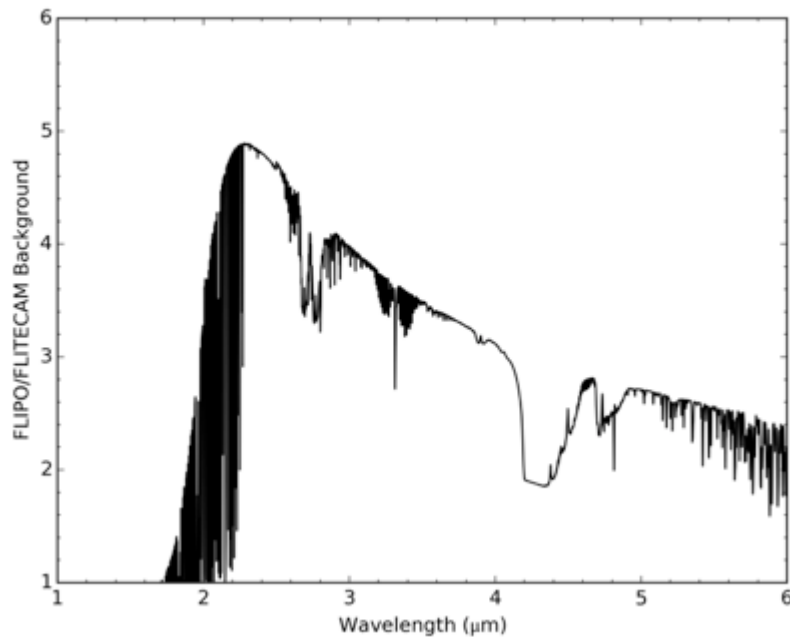


(This slide intentionally left blank)

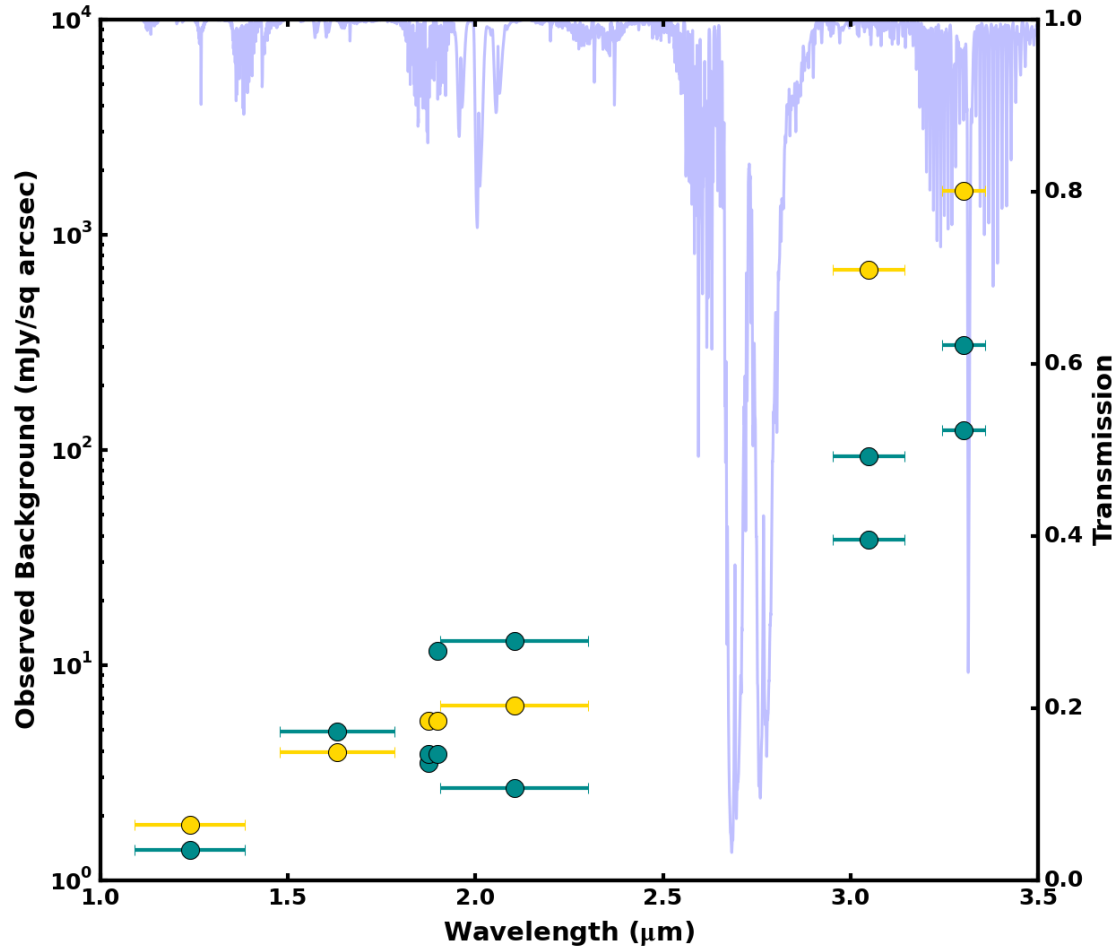


# Background Components

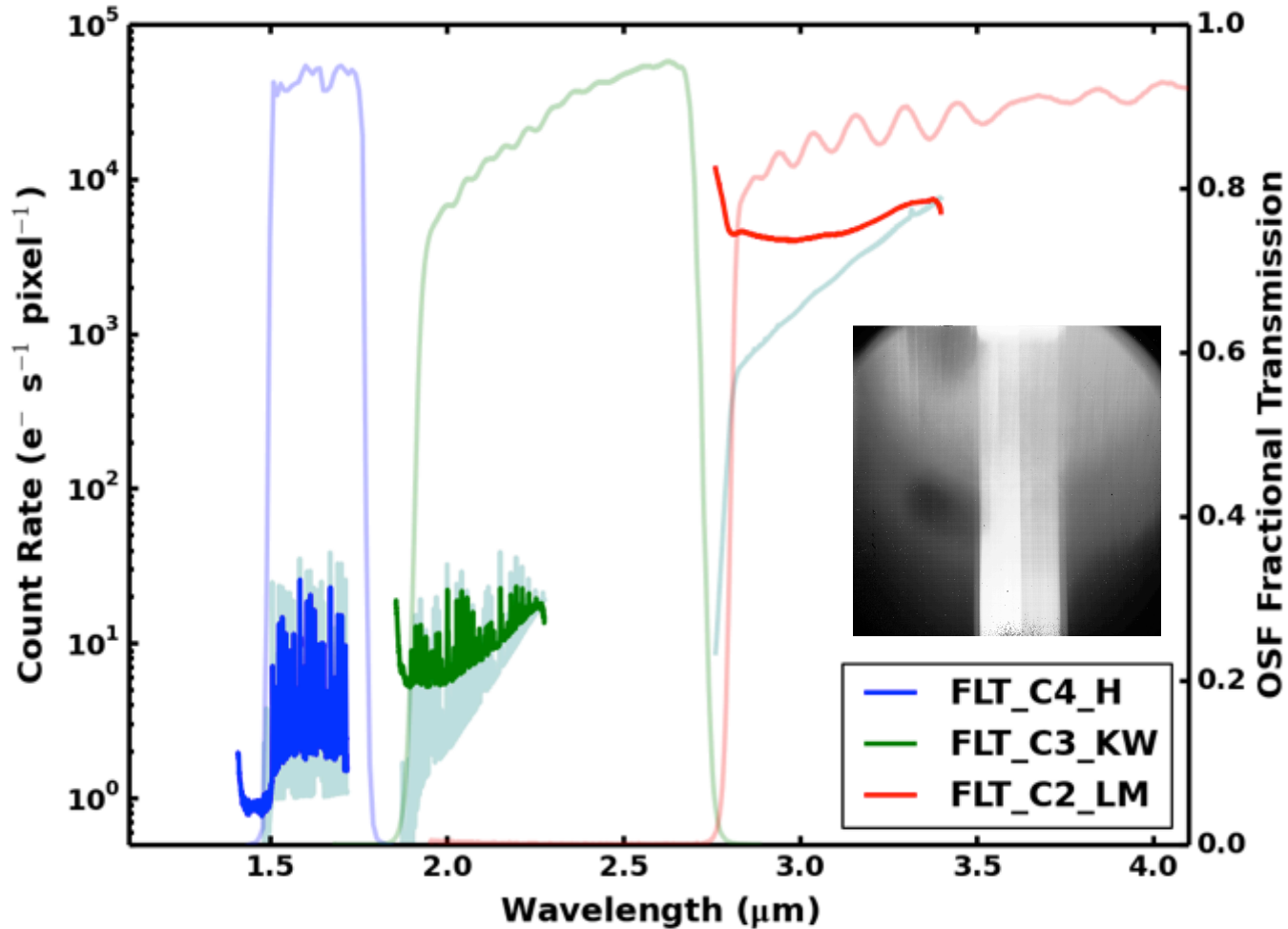
Prediction based on commissioning observations rolled into the current FLITECAM grism ETC



# Background Comparison







- FLITECAM solo backgrounds as expected
- Focal plane features being explored!

**SOFIA**

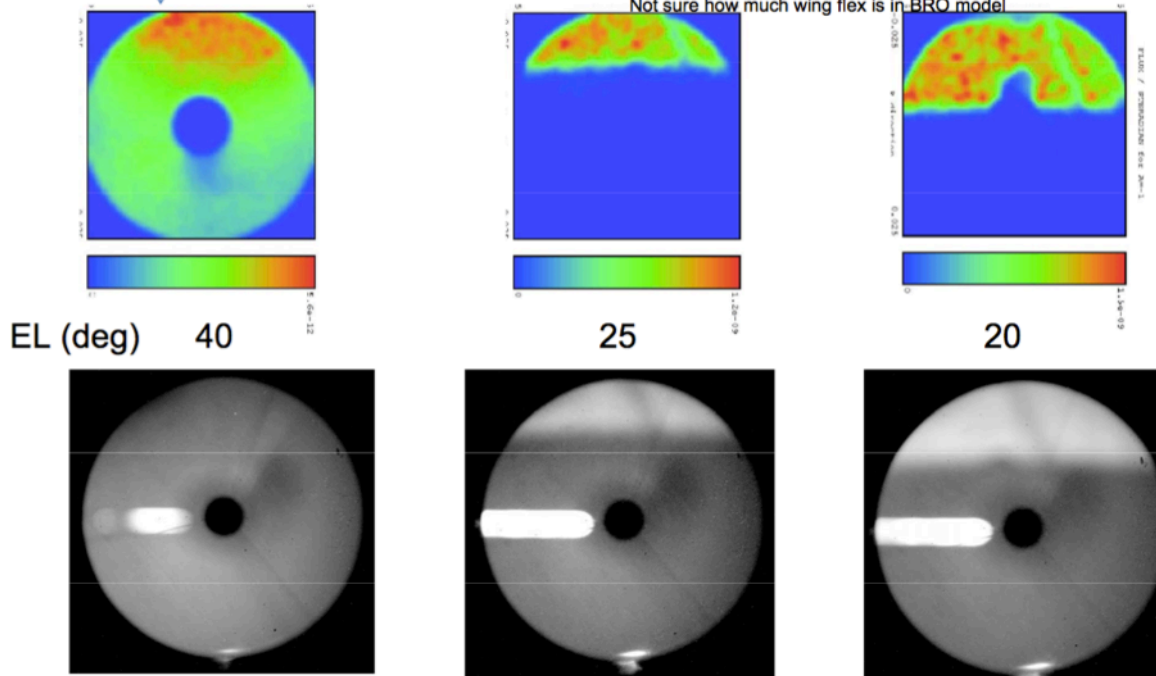
## Stray Light Images



TA Corresponding (5-7 $\mu$ m) model diagrams from BRO (1998) PM reflecting plume

Note: scale change  $\rightarrow$  1/214 for this diagram

Model assumes Level 500 contamination  $\rightarrow$   
12,000 x 50 micron particle, sq. ft. = 0.1m<sup>2</sup>  
Not sure how much wing flex is in BRO model



Courtesy of  
P. Waddell