



Cycle-4 Proposal Submission Statistics



- **Overview**

- *Cycle-4 is 12 months long*
 - July 2007 through June 2008
 - This is our last full cryo-cycle
 - Expect Cycle-5 to be 8-9 months long
- *Selecting 7000 hours*
 - GO/Legacy = 5600 hrs GTO = 1050 hrs DDT = 350 hrs
- *Data analysis funds ~ \$20 million*
 - \$2 million for Archive/Theory



Cycle-4 Schedule



- | | |
|---------------------------------------|--------------------------|
| • Proposal Call Issued | November 1, 2006 |
| • S15 Software Released | December 2006 |
| • Proposal Submission Deadline | February 16, 2007 |
| • GO3 Selection Review | April 16-20, 2007 |
| • Notify successful proposers | mid-May, 2007 |
| • Begin scheduling Cycle-4 | June 2007 |



Proposals Received



- **810 proposals received**
 - 631 General Observer +66 Archival + 35 Theoretical + 78 GTO
 - Cycle-3: 787 (612 +70 + 32 + 73)
 - Cycle-2: 704 (630 +56 + 18 + 0) Cycle-1: 594 (576 + 18 + 0 + 0)
- **Observing Proposals**
 - 25,430.4 GO hours requested (5350 hr available from Spitzer TAC)
 - 20% more hours requested versus Cycle-3 (21,836.6 hr), +40% from Cycle-2
 - GO Medium/Large and Legacy Proposals
 - 24 Legacy (6893 hr) 80 medium (7249 hr) 5 large (1418) Total = 15,560 hours
 - [C3: 22 Legacy (5480 hr) 56 medium (5255 hr) 3 large (885.8) Total = 11,621 hours]
 - Small Proposals
 - 522 proposal (9870 hrs) [C3: 531 proposals, 10,231 hr]
 - Oversubscription ~ 4.8 [C3: 3.6, C2: 3.1]
- **Archive/Theory Proposals**
 - \$5.1 million (archive) and \$2.6 million (theory) requested Total \$7.7million
 - Nearly identical request to Cycle-3 (\$8.1 million)
 - ~\$2 million available (same as Cycle-3) Oversubscription: 4.3

Submission Statistics
Cycle-4 Proposal Call

5 March 2007 LSL-3



Joint Time Requested



| | <u>Requested</u> | <u>Available</u> |
|--|---------------------------------|------------------|
| • HST | 8 proposals, 93.5 orbits | 90 orbits |
| • Chandra | 8 proposals, 626 ksecs | 400 ksec |
| • NRAO | 3 proposals | 200 hrs |
| | – VLA 92/GBT 14 hrs | |
| • NOAO | 10 proposals | |
| | – Gemini, CTIO, NOAO, SMARTS | |
| • Spitzer is offering 125 hours each via HST/Chandra TACs | | |

Submission Statistics
Cycle-4 Proposal Call

5 March 2007 LSL-4



Institutions/Countries



- **211 (206, 203) institutions in 27 (28, 25) nations**

- **Top 10+ institutions (non-GTO proposals)**

| | | | | | |
|---------|----|---------------|----|------------------|----|
| SSC | 53 | NASA ARC+SETI | 24 | IPAC/MS/NHSC | 16 |
| CfA+SAO | 40 | Arizona | 22 | UCLA | 14 |
| JPL | 26 | Caltech | 17 | GSFC, Texas, JHU | 13 |

- **19% are foreign-led proposals (same as C2,C3)**

- **Distribution of foreign proposals**

| | |
|-----------------------|--|
| 41 UK | 6 Japan |
| 19 Germany | 4 Austria |
| 16 France | 3 Denmark, India, Switzerland |
| 13 Italy | 2 Australia, China, Chile, Israel |
| 9 Netherlands, Canada | 1 Brazil, Finland, Greece, Hungary, Ireland, |
| 8 Spain | Mexico, Poland, Taiwan, Venezuela |

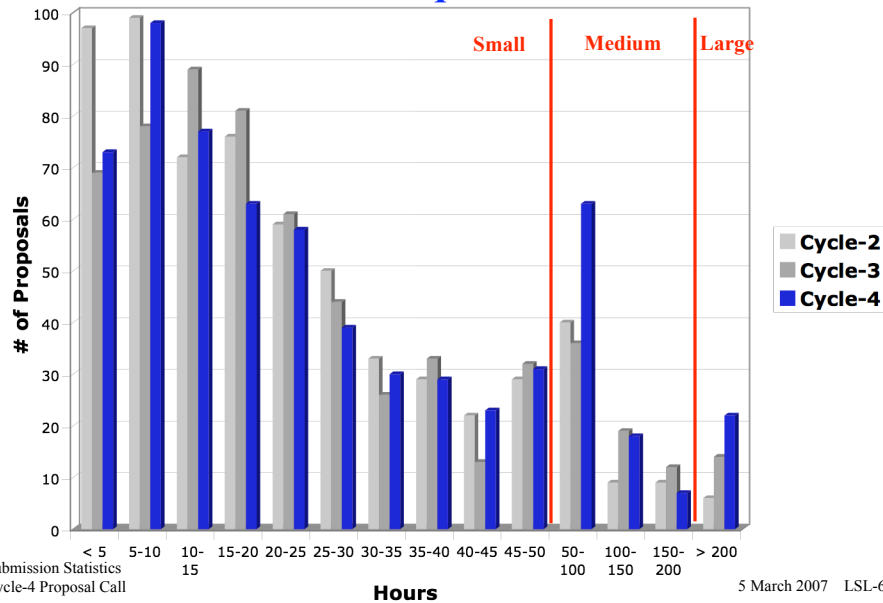
Submission Statistics
Cycle-4 Proposal Call

(Cycle-3,2 numbers are in parentheses)

5 March 2007 LSL-5



Distribution of GO Time Requested

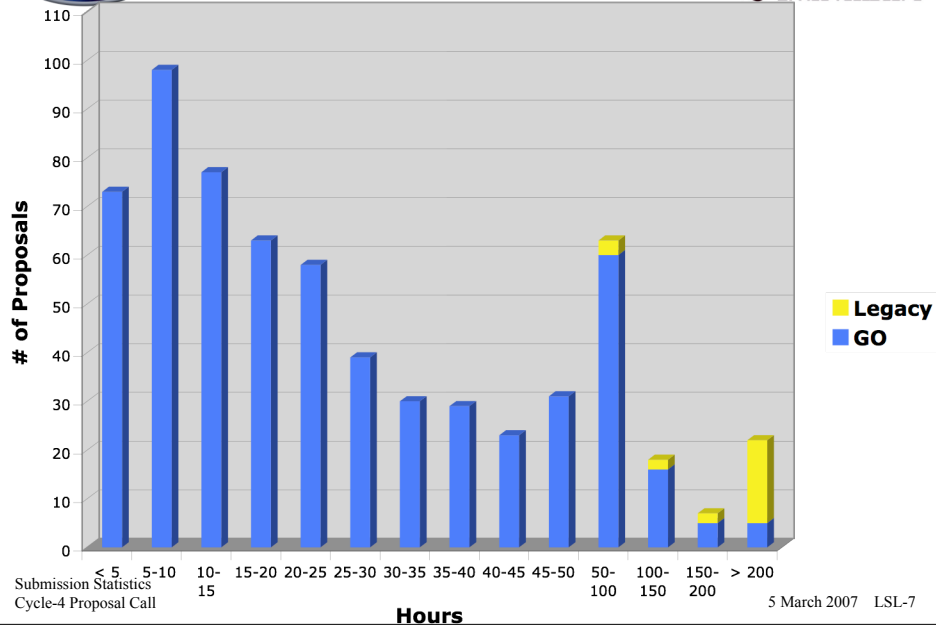


Submission Statistics
Cycle-4 Proposal Call

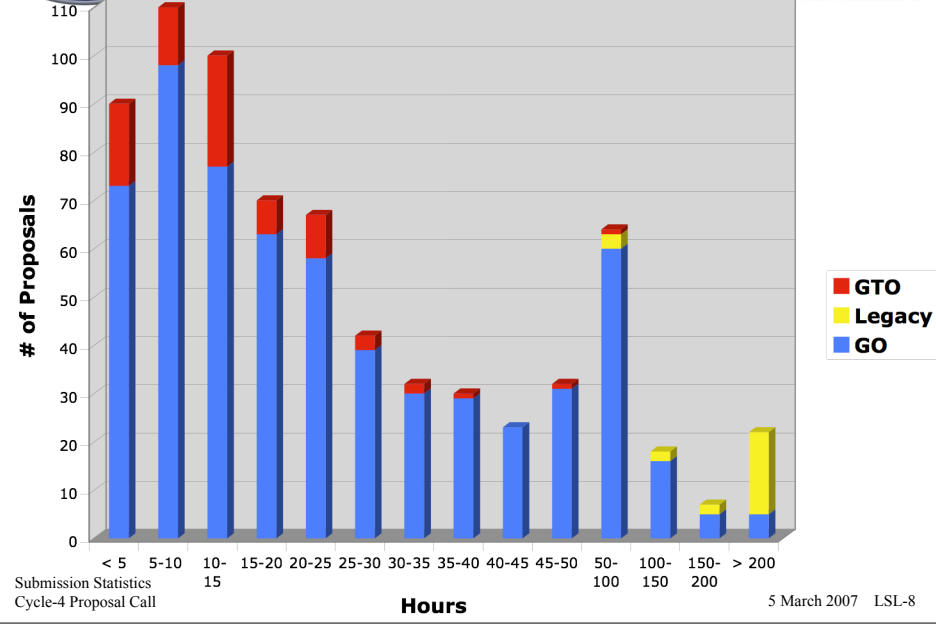
5 March 2007 LSL-6



Cycle-4 GO + Legacy



Cycle-4 All





Cycle-4 Proposal Size Statistics



| Proposal Size | Number | Median (hours) | Mean (hours) |
|-------------------------|---------------|-------------------|-----------------|
| All GO | 631 (612,630) | 20.3 (19,18) | 40.3 (36,29) |
| Small (< 50 hrs hrs) | 522 (531,565) | 15.6 (17,16) | 18.9 (19,19) |
| Medium (50-200 hrs) | 80 (56,59) | 79.9 (91,78) | 90.6 (94,95) |
| Large (> 200 hrs) | 5 (3,6) | 256.0 (307,379) | 283.6 (295,374) |
| Legacy (> 50 hrs) | 24 (22,0) | 277.7 (219,0) | 287.2 (249,0) |
| Archival (\$15-250k) | 66 (70, 56) | \$74k (72k,72k) | \$78k (81k,81k) |
| Theoretical (\$32-103k) | 35 (32, 18) | \$74k (70k,70k) | \$75k (74k,68k) |

(Cycles-3,2 Numbers in parentheses)

Submission Statistics
Cycle-4 Proposal Call

5 March 2007 LSL-9



Science Categories Number of Proposals



- **Extragalactic (43%)** *52 medium, 15 large*

| | | | | | | | |
|---------------------|-------------|-----------------|-------|------|-------------|-------------|---|
| AGN/QSOs/RG | 75 (9) [1] | CIB | 4 (1) | GRBs | 5 | Dark Matter | 3 |
| ULIRG/LIRG/HLIRG | 19 (4) | Cosmology | | | 16 (10) [2] | | |
| High-z (z > 0.5) | 61 (11) [5] | High-z clusters | | | 15 (2) | | |
| Intermediate-z | 14 (3) [1] | Local Group | | | 16 (1) [2] | | |
| Nearby galaxies | 75 (7) [3] | Starbursts | | | 12 (1) | | |
| Interacting/Merging | 16 (1) | Low-z clusters | | | 17 (2) | | |
- **Galactic (51%)** *34 medium, 6 large*

| | | | | | |
|--------------------|------------|-----------------|------------|---------------|------------|
| Compact Objects | 27 (0) [1] | HII Regions | 14 (0) [1] | ISM | 52 (3) |
| Evolved stars | 51 (3) | Clusters | 6 (1) | YSOs | 33 (6) [1] |
| Star Formation | 56 (2) [2] | Stellar Pop. | 3 | Disks | 99 (3) |
| Galactic structure | 4 (1) [1] | X-gal stars | 10 (1) | Massive Stars | 8 |
| BD/low mass stars | 30 (2) | X-solar Planets | 23 (12) | | |
- **Solar System (6%)** *2 medium, 2 large*

| | | | | | | | |
|---------------|--------|---------------------|-----------|------------|-----------|--------|--------|
| Asteroids | 16 (1) | Planets | 4 | Satellites | 4 | Comets | 13 (0) |
| Zodiacal dust | 2 | Kuiper belt objects | 6 (2) [1] | NEOs | 3 (0) [1] | | |

Note: **Bold**=total proposals, parentheses=(medium), brackets=[large].

Includes all proposals (GO/Legacy, GTO, AR/TR)

Submission Statistics
Cycle-4 Proposal Call

5 March 2007 LSL-10



Science Categories % of Time Requested



- **Extragalactic (55.2%)**

| | | | | | | | |
|----------------------|-------|-----------------|------|------|------|-------------|------|
| AGN/QSOs/RG | 8.2% | CIB | 0.6% | GRBs | 0.4% | Dark Matter | 0.4% |
| ULIRG/LIRG/HLIRG | 2.9% | Cosmology | | | 7.6% | | |
| High-z ($z > 0.5$) | 14.1% | High-z clusters | | | 1.5% | | |
| Intermediate-z | 2.7% | Local Group | | | 3.1% | | |
| Nearby galaxies | 9.3% | Starbursts | | | 1.2% | | |
| Interacting/Merging | 1.2% | Low-z clusters | | | 2.1% | | |
- **Galactic (39.6%)**

| | | | | | |
|--------------------|------|-----------------|------|---------------|------|
| Compact Objects | 1.8% | HII Regions | 2.1% | ISM | 4.4% |
| Evolved stars | 3.3% | Clusters | 0.5% | YSOs | 4.9% |
| Star Formation | 4.8% | Stellar Pop. | 0.1% | Disks | 6.8% |
| Galactic structure | 3.0% | X-gal stars | 0.7% | Massive Stars | 0.2% |
| BD/low mass stars | 2.1% | X-solar Planets | 4.8% | | |
- **Solar System (5.2%)**

| | | | | | | | |
|---------------|------|---------------------|------|------------|------|--------|------|
| Asteroids | 0.9% | Planets | 0.1% | Satellites | 0.2% | Comets | 0.7% |
| Zodiacal dust | 0.1% | Kuiper belt objects | 2.2% | NEOs | 1.1% | | |

Submission Statistics
Cycle-4 Proposal Call

5 March 2007 LSL-11



Legacy Proposals



- **24 Legacy proposals submitted**
 - 6893.1 hours requested (C3: 5480.1 hrs)
 - 7 medium (50-200 hours), 15 large (> 200 hours)
- **14 Extragalactic , 7 Galactic, 1 Solar System**

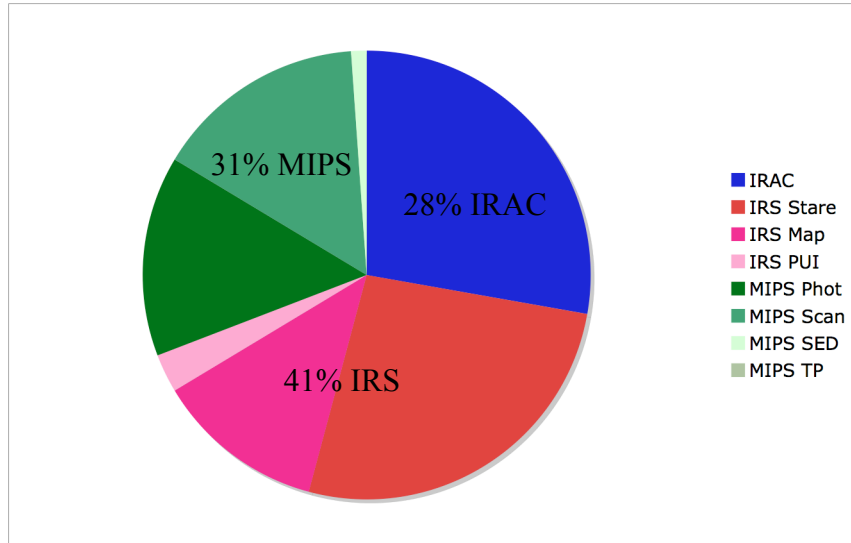
| Category | Proposals | Hours |
|--------------------------------|-----------|--------|
| AGN/QSOs/Radio Galaxies | 1 | 560.0 |
| High-z ($z > 0.5$) | 3 | 936.0 |
| Cosmology | 5 | 1253.6 |
| Intermediate-z | 1 | 274.9 |
| Nearby Galaxies | 4 | 828.8 |
| Local Group | 2 | 541.5 |
| Star Formation | 3 | 681.1 |
| Galactic Structure | 1 | 662.0 |
| Exgal Stars, HII regions, YSOs | 1 each | 902.1 |
| Near Earth Objects | 1 | 253.0 |

Submission Statistics
Cycle-4 Proposal Call

5 March 2007 LSL-12



Time Request by AOT



Submission Statistics
Cycle-4 Proposal Call

5 March 2007 LSL-13